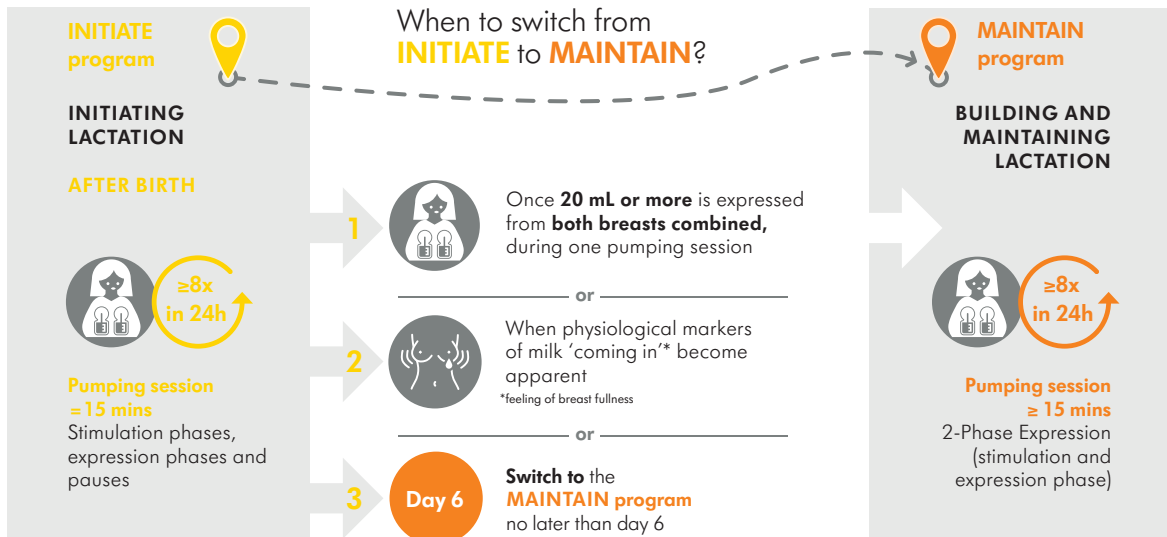


Symphony® Quick Start Guide

Scan to visit
Symphony Hub for
easy step-by-step
instructions and videos



Note: This quick guide does not replace the complete instructions for use.
Please refer to the Symphony instructions for use for further information.

medela 
THE SCIENCE OF CARE™

Wash hands thoroughly with soap and water before touching the breast pump, the pump sets and breasts.

INITIATE program

You can tell this program is running from these symbols on the display:



Press the
On/off button



Press the 'Let-down'
button within
10 seconds to use the
INITIATE program



Set maximum
comfort vacuum



NOTE: Program
ends automatically

MAINTAIN program

You can tell this program is running from these symbols on the display:



Press the
On/off button

wait ▶



The **MAINTAIN program** will automatically start with the stimulation phase



If milk begins flowing before the two minutes have passed, press the 'Let-down' button to switch straight to the expression phase. After 2 minutes in the stimulation phase, the pump switches automatically to the expression phase.



Set maximum
comfort vacuum



NOTE: Program does
not end automatically

IMPORTANT!

For maximum effectiveness, efficiency and comfort, always double pump with your maximum comfort vacuum and correctly fitted breast shields. Go to www.medela.com/fittingguide to find your breast shield size.

Adjust to your **maximum comfort vacuum** by turning the vacuum knob to the right to increase suction until you experience slight discomfort. Next, turn it to the left to decrease suction until it is comfortable.